

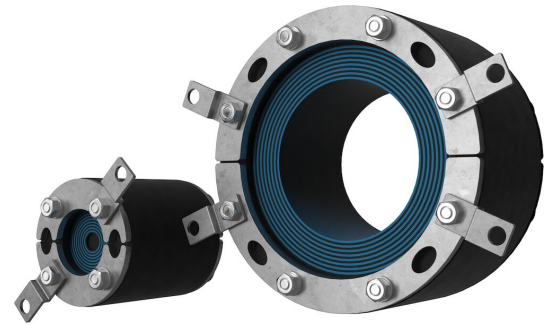


Etanșare Roxtec RS UG™

Etanșare rotundă singulară pentru cabluri și țevi care intră prin fundații.

Roxtec RS UG™ este o etanșare singulară din două părți pentru instalarea în jurul cablurilor sau al țevilor care intră prin fundații. Aceasta funcționează ca o barieră de lungă durată împotriva inundațiilor, gazelor, umidității și rozătoarelor. De asemenea soluția poate fi instalată în condiții de umiditate sau în prezența apei. Rezistă la o îndoire extremă a cablurilor și are o toleranță de +5 mm spre exterior, precum și un indicator care arată când se obține o compresie optimă. Etanșarea poate fi instalată în manșoane, țevi și găuri carotate.

- Rezistent la rozătoare
- Rapid și ușor de instalat
- Ușor de întreținut și inspectat



Caracteristicile produsului



Etanșă la apă



Etanșă la gaze



IP/UL NEMA

Structura instalației



Beton

Tip de montaj



Gol existent



Piesă de trecere existentă

Clase și certificate

Etanșeitate

- Gaz: 0,3 bari (constantă)
- Apă: 0,3 bari (constantă)
- IP 68

Date componente de etanșare

Componente de etanșare



Etanșare RS UG™



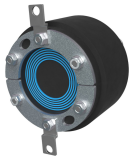
Lubrifiant Roxtec

Pentru mai multe informații, vă rugăm să vizitați [roxtec.com](https://www.roxtec.com).

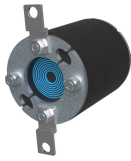


Kituri de treceri preconfigurate

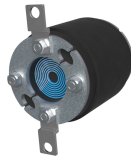
mm/kg



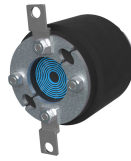
RS 110 UG



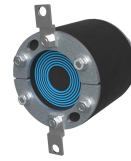
RS 70 UG



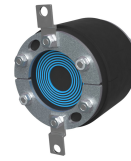
RS 75 UG



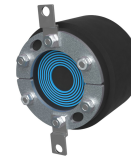
RS 80 UG



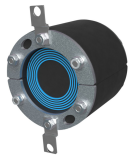
RS 90 UG



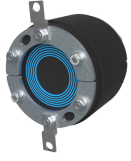
RS 95 UG



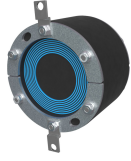
RS 100 (4") 24-53 UG



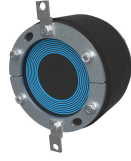
RS 100 (4") UG



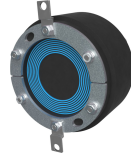
RS 105 UG



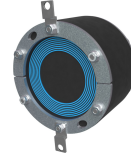
RS 125 (5") UG



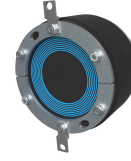
RS 130 UG



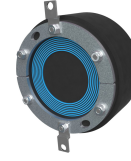
RS 135 55-88 UG



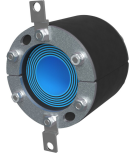
RS 135 UG



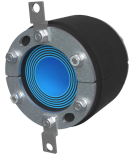
RS 140 UG



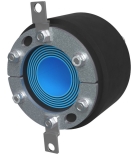
RS 145 UG



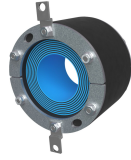
RS 100 (4") UG WOC



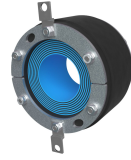
RS 105 UG WOC



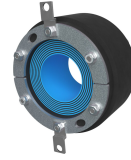
RS 110 UG WOC



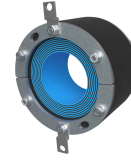
RS 125 (5") UG WOC



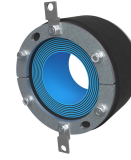
RS 130 UG WOC



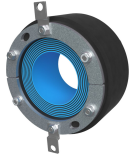
RS 135 55-88 UG WOC



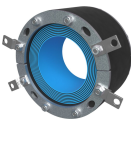
RS 135 UG WOC



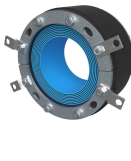
RS 140 UG WOC



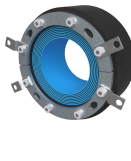
RS 145 UG WOC



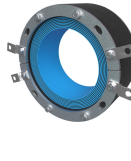
RS 150 UG WOC



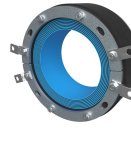
RS 155 UG WOC



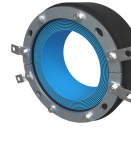
RS 160 UG WOC



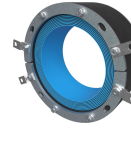
RS 185 UG WOC



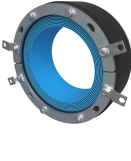
RS 190 UG WOC



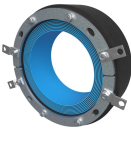
RS 195 UG WOC



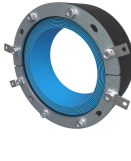
RS 200 (8") UG WOC



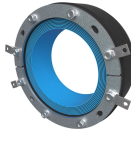
RS 205 UG WOC



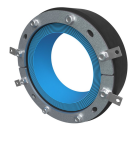
RS 210 UG WOC



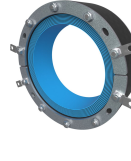
RS 225 UG WOC



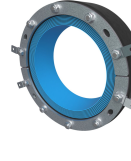
RS 230 UG WOC



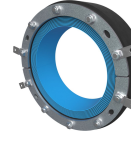
RS 235 UG WOC



RS 250 UG WOC



RS 255 UG WOC



RS 260 UG WOC



Titlu	Configurație	Dimensiuni deschidere Ø	Greutate	Nr. art.
RS 110 UG	1x (39.0-63.0)	110 - 115	1.2	186252
RS 70 UG	1x (9.0-33.0)	70 - 75	0.6	167234
RS 75 UG	1x (9.0-33.0)	75 - 80	0.6	186247
RS 80 UG	1x (9.0-33.0)	80 - 85	0.7	186248
RS 90 UG	1x (24.0-53.0)	90 - 95	0.9	167263
RS 95 UG	1x (24.0-53.0)	95 - 100	1	186249
RS 100 (4") 24-53 UG	1x (24.0-53.0)	100 - 105	1	186250
RS 100 (4") UG	1x (39.0-63.0)	100 - 105	1.1	167236
RS 105 UG	1x (39.0-63.0)	105 - 110	1.2	186251
RS 125 (5") UG	1x (55.0-88.0)	125 - 130	1.6	167638
RS 130 UG	1x (55.0-88.0)	130 - 135	1.6	186253
RS 135 55-88 UG	1x (55.0-88.0)	135 - 140	1.7	186254
RS 135 UG	1x (65.0-98.0)	135 - 140	1.8	167240
RS 140 UG	1x (65.0-98.0)	140 - 145	2	186255
RS 145 UG	1x (65.0-98.0)	145 - 150	2	186256
RS 100 (4") UG WOC	1x (39.0-63.0)	100 - 105	1	167265
RS 105 UG WOC	1x (39.0-63.0)	105 - 110	1	186257
RS 110 UG WOC	1x (39.0-63.0)	110 - 115	1.1	186258
RS 125 (5") UG WOC	1x (55.0-88.0)	125 - 130	1.4	167639
RS 130 UG WOC	1x (55.0-88.0)	130 - 135	1.4	186259
RS 135 55-88 UG WOC	1x (55.0-88.0)	135 - 140	1.5	186260
RS 135 UG WOC	1x (65.0-98.0)	135 - 140	1.6	167266
RS 140 UG WOC	1x (65.0-98.0)	140 - 145	1.7	186261
RS 145 UG WOC	1x (65.0-98.0)	145 - 150	1.8	186262
RS 150 UG WOC	1x (80.0-113.0)	150 - 155	1.8	167246
RS 155 UG WOC	1x (80.0-113.0)	155 - 160	1.9	186263
RS 160 UG WOC	1x (80.0-113.0)	160 - 165	2	186264
RS 185 UG WOC	1x (114.0-148.0)	185 - 190	2.3	167258
RS 190 UG WOC	1x (114.0-148.0)	190 - 195	2.4	186265
RS 195 UG WOC	1x (114.0-148.0)	195 - 200	2.6	186266
RS 200 (8") UG WOC	1x (130.0-163.0)	200 - 205	2.5	178151
RS 205 UG WOC	1x (130.0-163.0)	205 - 210	2.7	186267
RS 210 UG WOC	1x (130.0-163.0)	210 - 215	2.8	186268
RS 225 UG WOC	1x (146.0-179.0)	225 - 230	3.4	178166
RS 230 UG WOC	1x (146.0-179.0)	230 - 235	3.5	186269
RS 235 UG WOC	1x (146.0-179.0)	235 - 240	3.7	186270
RS 250 UG WOC	1x (171.0-204.0)	250 - 255	3.8	178178
RS 255 UG WOC	1x (171.0-204.0)	255 - 260	4	186271
RS 260 UG WOC	1x (171.0-204.0)	260 - 265	4.1	186272

The product information provided by Roxtec does not release the purchaser of the Roxtec system, or part thereof, from the obligation to independently determine the suitability of the products for the intended process, installation and/or use.

Roxtec gives no guarantee for the Roxtec system or any part thereof and assumes no liability for any loss or damage whatsoever, whether direct, indirect, consequential, loss of profit or otherwise, occurred or caused by the Roxtec systems or installations containing components not manufactured by an authorized manufacturer and/or occurred or caused by the use of the Roxtec system in a manner or for an application other than for which the Roxtec system was designed or intended.

Roxtec expressly excludes any implied warranties of merchantability and fitness for a particular purpose and all other express or implied representations and warranties provided by statute or common law. User determines suitability of the Roxtec system for intended use and assumes all risk and liability in connection therewith. In no event shall Roxtec be liable for indirect, consequential, punitive, special, exemplary or incidental damages or losses.

The Roxtec products are offered and sold in accordance with the conditions of the Roxtec General Terms of Sales. The latest version of the Roxtec General Terms of Sales can be downloaded from <https://www.roxtec.com/en/about-us/about-roxtec/general-terms-of-sales/>

We reserve the right to make changes to the product and technical information without further notice. Any errors in print or entry are no claims for indemnity. The content of this publication is the property of Roxtec International AB and is protected by copyright.

This document was generated on: 2024-04-16